

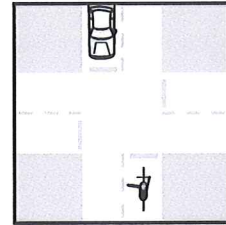
**BICYCLE TEST**

NAME: \_\_\_\_\_ Pre-test  Post-test

This test will help us know how well you understand the rules of the road as they apply to bicycles. Read all questions carefully. Questions will ask you to either label pictures, choose the best answer to a question, or list answers.

1 You and the car across from you reach this four-way stop intersection at the same time. You are turning left and the car is going straight. Mark the one answer that best explains what you will do.

- A. Stop, signal left, wait for the car to go first, and then turn left
- B. Stop, turn through the intersection, and then let the car go straight
- C. Make eye contact with the driver and make your turn



2 You are riding at night in a properly lighted neighborhood. Choose the answer that best describes the law requirements and makes you most visible.

- A. Bright clothes and reflectors
- B. Flash light and reflectors
- C. Front white headlight, rear red light, on-bike reflectors, and reflective materials on clothing
- D. Reflective clothing and front head light

3 Write a brief description of what the following signs mean and label all parts of the traffic signal.



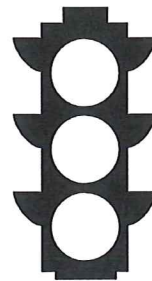
A. \_\_\_\_\_  
\_\_\_\_\_



B. \_\_\_\_\_  
\_\_\_\_\_



C. \_\_\_\_\_  
\_\_\_\_\_



D.  
Color:  
Action:  
  
Color:  
Action:  
  
Color:  
Action:

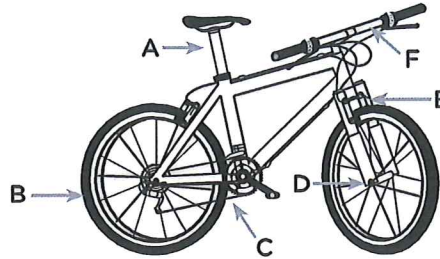
4 You are riding on the street and a stoplight that is 25 feet away turns yellow.

- A. Keep your current speed and if you see that the intersection is clear, go through it
- B. Slow down and stop at the light
- C. Continue going fast and stop wherever the light turns red
- D. Go faster and try to make it through the intersection

**BICYCLE TEST** PAGE 2

5 It is important to test if your bike is safe before each ride. Match the six things in the column to the left with the bike diagram on the right.

- \_\_\_ Quick release
- \_\_\_ Chain
- \_\_\_ Handlebars
- \_\_\_ Brakes
- \_\_\_ Seat
- \_\_\_ Tires



6 Mark the **three** most common situations when bicycle collisions occur.

- A. Bicyclist is riding in the opposite direction to the proper flow of traffic
- B. Bicyclist is riding in the same direction to the proper flow of traffic
- C. Bicyclist coming out from a driveway or sidewalk onto the street
- D. Bicyclist does not obey the proper rules of the road
- E. Bicyclist stays to the right side of the roadway
- F. Bicyclist rides through a green light

7 Label the hand signals with their proper meaning.



A. \_\_\_\_\_

B. \_\_\_\_\_

C. \_\_\_\_\_

D. \_\_\_\_\_

8 Mark the **five** most important actions or rules of the road that all bicyclists must follow for safe riding.

- A. Obey traffic laws and signs
- B. Always use hand signals
- C. Always ride on the sidewalk
- D. Wear a properly fitted helmet
- E. Check your bike for safety
- F. Ride on the left side of the street against traffic
- G. Use lights and bright clothing when riding at night
- H. Always let cars go before you at intersections